



www.artisanelectricinc.com

ARTISAN
ELECTRIC

PREPARED FOR:

Jody and Stephanie Biggs

2411 60th Ave SE

Bellevue, WA 98040

PRESENTED BY:

Thomas Staten

(206) 733-0941

thomas@artisanelectricinc.com

SOLAR PROPOSAL

All Pricing Presented is Valid for 30 days

OUR PROCESS



Since 2007, Artisan Electric has shaped the Puget Sound's energy future by leading the PNW clean energy workforce, educating communities, and advocating for better state policy. We are building an industry, not just a business.

With over 1,400 solar arrays and 11,000 kW of power installed, Artisan is one of the most respected solar contractors in the PNW. We are the only IBEW union electrical contractors specializing in solar in Washington State.

Artisan is proud to set industry standards for quality, craftsmanship, and customer service on every project, for every customer. With an integrated, whole-building approach to every project, we'll show you how solar is a smart investment and a great fit for your building and the environment.

THE FUTURE STARTS NOW

OUR PRODUCTS

- Residential & Commercial Solar
- Highly Accurate & Customizable PV Designs Using Scanfly Drone Technology
- Tesla Solar Roof & Tesla Powerwall
- Solar PV Removal/Reinstallation
- Upgrading Current PV Systems
- Solar PV Warranty Services
- EV Charging Stations
- Home Battery Backup
- Energy Monitoring Systems
- Off-Grid Systems
- Residential & Commercial Electrical Service
- Electrical Panel Upgrades

OUR PLEDGE

- 100% in-house, union labor
- 25 Year Workmanship warranty
- 25 Year Performance guarantee

We are committed to fair-labor practices including ensuring that our solar supply chain is free of forced labor and that our suppliers are committed to the same. We stand in solidarity alongside all members of the community who have been economically or socially disadvantaged by discrimination. We believe there is no climate justice without social and racial justice.



artisanelectricinc.com

OPTION 2:

30.24KW - SILFAB - 420 WATT - 10KWH BATTERY BACK-UP

SOLAR PANELS

72 Silfab 420 Watt Elite

INVERTERS

72 Enphase IQ8A

MONITORING

Enphase IQ Gateway

RACKING

All Black Composite Racking

BATTERY(S)

(2) Enphase IQ 5P

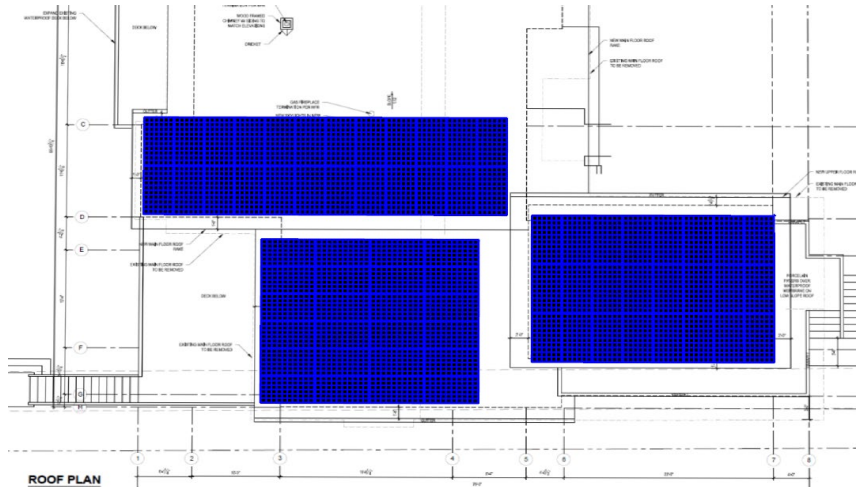
ARTISAN WARRANTIES

25 Years Workmanship

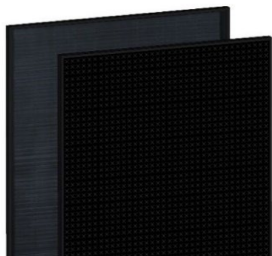
25 Years Performance

NOTES

Adjusted Design™ back-contact technology with an innovative conductive backsneet and integrated cell design delivers the highest performance, durability and beautiful aesthetics, 25 years module product workmanship warranty, 30 years linear power performance guarantee * panels made in WA * (2) 5kWh Enphase IQ Battery(s) Home Back-up



INVESTMENTS



TOTAL POWER

30,240 WATTS

ANNUAL SOLAR ENERGY PRODUCTION

24,918 KWH/YEAR

SYSTEM COST:	\$	94,819.39
SALES TAX:	\$	-
g	\$	-
SUBTOTAL:	\$	94,819.39

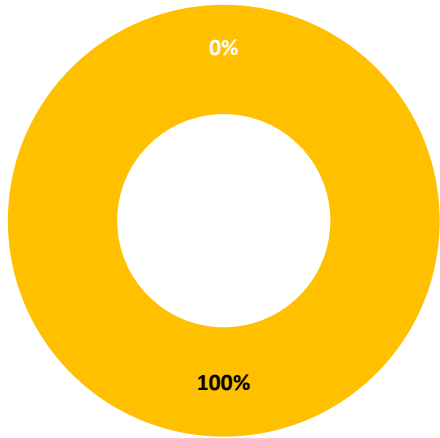
30% FEDERAL TAX CREDIT:	\$	(28,445.82)
TOTAL SYSTEM COST:	\$	66,373.57

artisanelectricinc.com



WHAT ARE THE COSTS OF MY ENERGY CHOICES?

ANNUAL ENERGY USAGE WITH SOLAR



■ Solar Production
 ■ Utility Consumption

24,918 kWh/year
 0 kWh/year

Estimated Annual Electrical Usage 24,854 kWh/year

HOW MUCH WILL I SPEND OVER THE NEXT 30 YEARS?

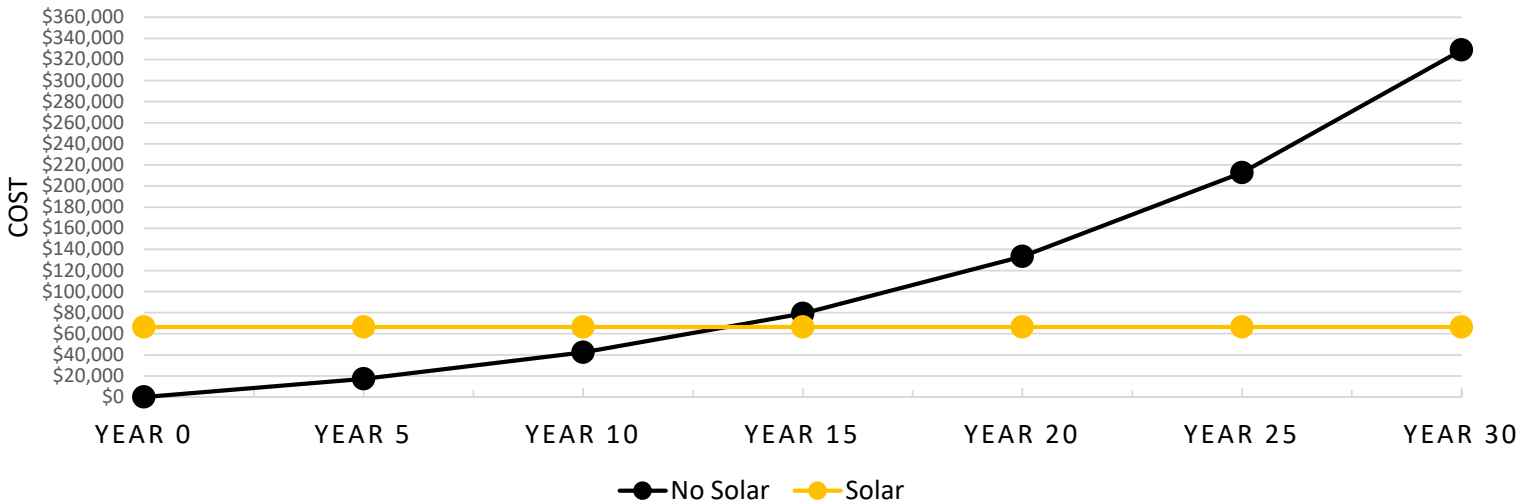
You'll be paying for power either way



■ Levelized Cost of Solar Energy (cents/kWh)*
■ Average Cost of Utility Energy (cents/kWh)**

** Assumes 8.5% annual utility rate increase over 30 years
 * Assumes .5% annual solar efficiency decrease over 30 years

UTILITY COST VS SOLAR SAVINGS



artisanelectricinc.com

**TOTAL NET SAVINGS
WITH SOLAR:**

\$ 262,456.06

YOU CAN MAKE A DIFFERENCE

THE AVERAGE
10 kW SYSTEM
WILL SAVE

2.7
METRIC
TONS
OF CO₂



THAT'S THE EQUIVALENT
OF ONE CAR TAKEN
OFF THE ROAD
EVERY MONTH



THAT'S THE
EQUIVALENT
OF

70 TREE
SEEDLINGS
GROWN FOR
10 YEARS
EACH



THAT'S EQUAL
TO 3300
POUNDS
OF DIRTY COAL
NOT BURNED



WHAT ABOUT WHEN THE SUN ISN'T SHINING?

When the sun is shining and usage is low, your solar will produce an excess of energy. That excess solar energy spins your meter backward and you receive a **1:1 electricity credit** that will be saved until you need it.

When the sun isn't shining (at night and during the winter months) the system will draw from the grid. The energy **credits you stored** while it was sunny will **offset your usage** while your production is lower.



artisanelectricinc.com

Thomas Staten

(206) 733-0941

thomas@artisanelectricinc.com

www.artisanelectricinc.com

NEXT STEPS



1. VERIFICATION

Your solar consultant will review your home's physical and electrical layout with our design team for the system you want.



2. CONTRACT

Once you approve the design layout, we'll send you your contract with the final design for electronic signature.



3. PRE-JOB WALK

We'll contact you to schedule your Pre-job walk where we'll review all aspects of construction with you.



4. INSTALLATION

Installation usually takes 2-4 days using 3-4 electricians and apprentices.

* Please be aware that we use impact tools, which are very noisy. Expect excessive noise on days one and two of your installation. If you have residents or pets who will be affected by loud noise please make arrangements.

* If a service upgrade or panel swap is required, expect to have your power off for one working day.



5. FINAL INSPECTION

Final payment will be due once the installation passes final inspection, per your contract.



6. METERS

Meters are installed.

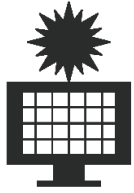


7. FINAL WALKTHROUGH

Final job walkthrough and hand-off with your solar consultant.



ENERGY EFFICIENCY INFORMATION



Solar represents just one part of the solution for energy independence and savings. Efficiency and conservation are two other important pieces.



The least expensive way to save energy is through conservation. Conserve energy by turning off lights, lowering your thermostat temperature at night, and keeping the thermostat set a few degrees lower in the winter and a few degrees higher in the summer (to reduce heating and cooling usage). Shorter showers, washing clothes in cold water, and turning off the water while shaving or brushing teeth are a few other ways to conserve. Unplugging any appliance (large or small) that draws current while not in use can also eliminate "phantom loads". Power strips work well for this.



Energy efficiency can sometimes require an investment in special appliances or devices, but that investment can have a substantial impact. Higher-efficiency furnaces or heat pumps, LED lighting, dual-flush toilets, air sealing and insulation, double-pane windows, rheostats, smart lights, or motion light switches are all excellent tools for increasing home and business energy efficiency.



A good way to get ideas and information about specific ways you can improve is through an energy performance audit. Artisan offers home inspections to show you detailed ways to improve its energy performance.

If you are a customer of PSE, Seattle City Light, Snohomish PUD, Tacoma Power, or other select utilities, contact the utility for a list of energy analysts who can help, and the money you save will easily pay for the evaluation. If you would like Artisan to perform an evaluation for you, call our office to schedule an appointment.



artisanelectricinc.com

Thomas Staten
(206) 733-0941
thomas@artisanelectricinc.com
www.artisanelectricinc.com